



DOCUMENTATION SHEET

Steel Spring Isolator

Type MS

MS

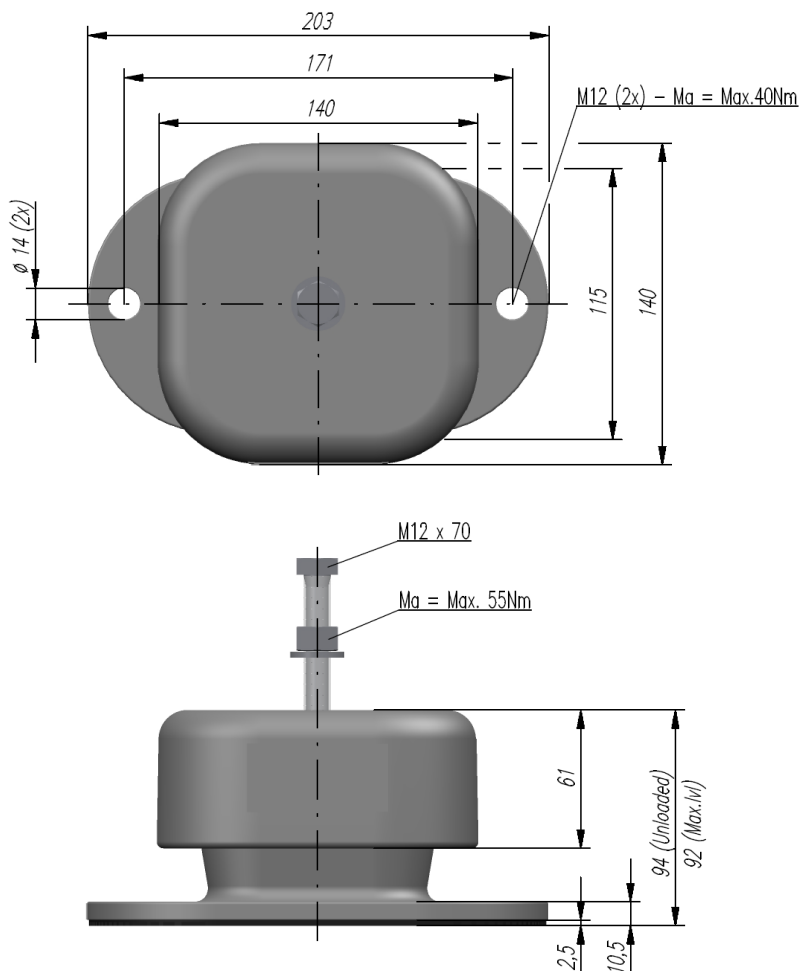
General

The helical spring isolators are enclosed in aluminum castings, the top interlocking with the base. A built-in leveling device is adjustable by the supplied top fixing screw. A molded neoprene O-ring prevents metal to metal contact of the casting and forms a seal against the weather and contaminants.

Low profile multiple spring isolators type MS, LS, LR and LRX are available for a load range up to 41.5 kN.

Applications

- Generator sets
- Emergency power supplies
- DC-AC converters
- Industrial fans
- Air-handling units
- Pumps
- Air-conditioning machines
- Compressor packages
- Electrical equipment
- Refrigerators
- Cooler units



DIMENSIONS



Type	Cx, y [N/mm]			
	Cz [N/mm]	at preferential load	Fz max [N]	Fz preferential [N]
MS500	91,5	34,0	2320	2010
MS600	115,6	41,9	2926	2535
MS750	130,0	46,5	3290	2850
MS860	151,6	53,1	3850	3335
MS1000	175,0	60,5	4445	3850
MS1250	219,0	72,5	5560	4815
MS1400	245,0	77,7	6221	5394
MS1500	262,5	82,0	6665	5780
MS1600	285,7	91,4	7253	6290
MS1750	308,9	100,8	7841	6800

CHARACTERISTICS

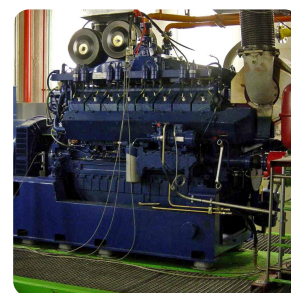
Isolator selection

This described isolator selection is based on the vertical load of the isolators, if required seismic and 6 DOF calculations can be performed by our specialists.

1. Determine the total weight of the machine to be isolated, including work load
2. Determine the position of the combined centre of gravity in horizontal and vertical planes
3. Decide the number of isolators and the positions where the isolators are to be placed relative to the combined centre of gravity
4. Calculate the load per isolator
5. Select with the help of the preferential load in the table the suitable type of mounting

We recommend selection of the isolators be made with the load per isolator within + or - 10% of the preferential load. The static deflection of the isolator is calculated by dividing the load per isolator by the stiffness Cz given in the table for the selected isolator.

SSM



Rubber Design B.V.

Industrieweg 21
2995BE Heerjansdam
The Netherlands
Phone: +31 (0) 78 677 87 78
Fax: +31 (0) 78 677 10 38
Email: info@rubberdesign.nl
Web: www.rubberdesign.nl